

Status of the Iowa Workforce and Economy

Upcoming 2019 News Release Schedule

Reference Month	Statewide News Release	Local Area News Release
Jan	Mar 11	Mar 11
Feb	Mar 22	Mar 26
Mar	Apr 19	Apr 23
Apr	May 17	May 21
May	Jun 21	Jun 25
Jun	Jul 19	Jul 23
Jul	Aug 16	Aug 20
Aug	Sep 20	Sep 24
Sep	Oct 18	Oct 22
Oct	Nov 19	Nov 19
Nov	Dec 20	Dec 24
Dec	Jan 24	Jan 28

Iowa Nonfarm Employment Seasonally Adjusted

Year	Month	Iowa Statewide Employment	Construction Employment
2019	Jan	1,593,400	77,100
	Feb	1,587,300	76,300
	Mar	1,584,500	74,800
	Apr	1,589,000	77,300
	May	1,589,300	77,400
	Jun	1,593,100	78,500
	Jul	1,594,900	79,200
	Aug	1,595,200	80,200

Iowa Workforce Development

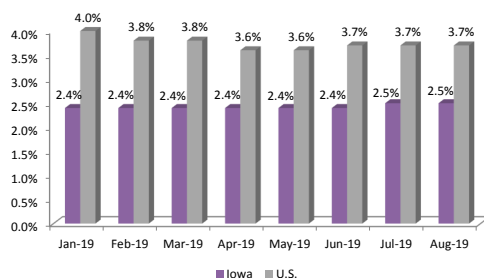
Information Prepared by the Labor Market Information Division

1000 East Grand Avenue
Des Moines, Iowa 50319-0209

Phone: 515-242-5862
Fax: 515-281-8203

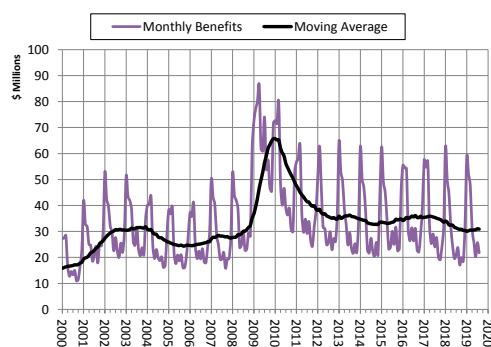
Donna Burkett, Bureau Chief
Iowa Workforce Development

Iowa and U.S. Unemployment Rates 2019



- Iowa's unemployment rate remained at 2.5 percent in August. The state's jobless rate was 2.4 percent one year ago.
- The state's total employment level increased to 1,686,200 in August from 1,680,400 in July.
- The U.S. unemployment rate was unchanged at 3.7 percent in August.

Unemployment Insurance (UI) Benefits Paid (Regular State UI Only)



- The monthly UI benefit payout averaged \$31 million for the twelve months ending August 2019. This is slightly lower than the same period for 2018.
- The twelve month average UI benefit payout has run between \$30 million and \$32 million for fifteen months.

- Iowa establishments added a slight 300 jobs in August. This is the fifth consecutive monthly gain.
- Construction led all sectors with 1,000 jobs added. The growth was fueled by construction of residential and nonresidential buildings.
- The financial activities sector added 800 jobs. This increase follows job losses in each of the last two months. This sector is down 700 jobs annually.
- Professional and business services has added 2,000 jobs in the last two months. Much of this gain has been in administrative and support services.
- Health care and social assistance lost 1,500 jobs in August. Despite the drop, this sector has gained 1,600 jobs versus last year.
- Trade and transportation shed 400 jobs due to continued cutbacks in retail trade. This is the fifth-straight loss in retail.
- Compared to last year, Iowa firms have added 12,600 jobs. Manufacturing alone has gained 6,500 jobs.
- U.S. total nonfarm employment increased by 130,000 jobs in August.

Iowa Total Nonfarm Employment January 2018 - August 2019

